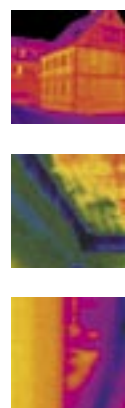


ThermaCAM™ B4

Especially developed for the building industry
Unparalleled image quality (320 x 240 pixels)



- HIGH THERMAL SENSITIVITY (0.10°C)
- EXTRAORDINARY IMAGE QUALITY (320 X 240 PIXELS)
- USEFUL BUILDING FEATURES INCORPORATED
- SOUND AND COLOR ALARMS
- WIDE-RANGE OF LENSES AND ACCESSORIES
- IN-FIELD TEXT ANNOTATION
- THERMACAM QUICKVIEW™ SOFTWARE INCLUDED
- COMPATIBLE WITH THERMACAM REPORTER™ AND THERMACAM IMAGE BUILDER™
- SPECIAL CALIBRATION FOR THE BUILDING INDUSTRY (-20°C +100°C)



Infrared camera producing ultra-sharp images with all features for professional building inspections

ThermaCAM™ B4

EASY AND QUICK BUILDING INSPECTIONS WITH THE THERMACAM B4

To meet the specific needs of the demanding building industry FLIR Systems has teamed up with professional and experienced building inspectors and has developed the ThermaCAM B4. The result is an infrared camera with unparalleled image quality (320 x 240 pixels), which has the features that are indispensable when doing infrared building inspections, and the necessary software to make professional inspection reports.



POWERFUL FEATURES ESPECIALLY DEVELOPED FOR THE BUILDING INDUSTRY

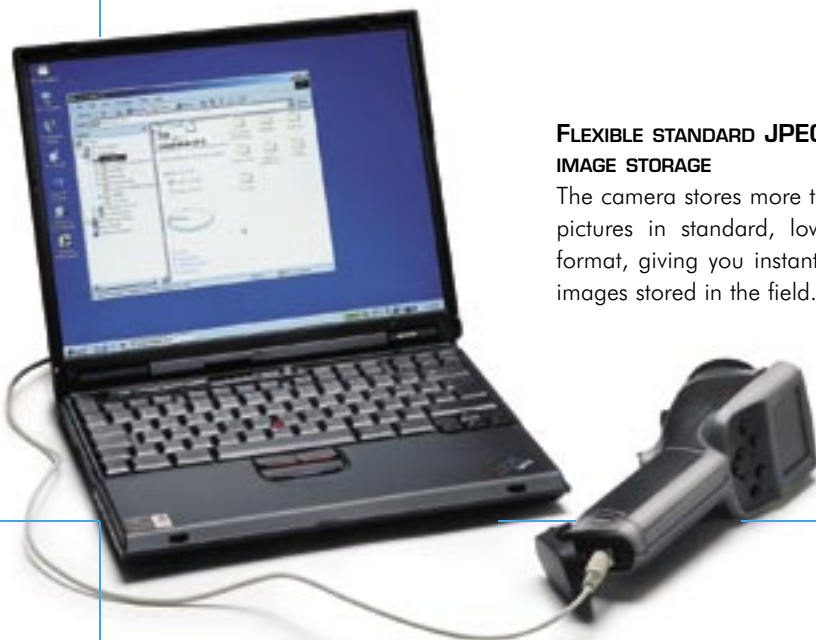
- UNPARALLELED IMAGE QUALITY (320 x 240 PIXELS)
- AUTOMATIC DEW POINT IDENTIFICATION ALARM - IN THE CAMERA, ON-SITE, NO SOFTWARE NEEDED
- SOUND AND COLOR ALARMS
- IN-FIELD TEXT ANNOTATIONS
- LASER LOCATIR
- ESPECIALLY CALIBRATED FOR THE BUILDING INDUSTRY (-20 °C UP TO +100 °C)

ADAPTABLE TO THE MOST CHALLENGING SITUATION THANKS TO A WIDE RANGE OF ACCESSORIES

The ThermaCAM B4 is designed with a 23° lens, which is suitable for a majority of building applications. Interchangeable optics offer the building thermographer the flexibility to adapt his infrared camera to the most demanding building applications.

FLEXIBLE STANDARD JPEG IMAGE STORAGE

The camera stores more than 80 infrared pictures in standard, low density JPEG format, giving you instant visibility of the images stored in the field.



EASY OPERATION

At the touch of a button you can easily change color palettes, emissivity settings, temperature ranges and other analysis tools. Built-in menu systems provide easy access to advanced yet simple to use software.



LOCATE AND ANALYZE PROBLEMS FAST

Analyze problems and share results with your colleagues in the field. Movable crosshairs allow you to measure and analyze the temperature at a single point. Find the hottest spot in a defined area, highlight areas of concern with color or sound alarms. The ThermaCAM B4 has all the analysis tools you need to make instant building decisions in the field.



THERMACAM QUICKVIEW™ BASIC REPORTING SOFTWARE INCLUDED

The ThermaCAM B4 comes with the ThermaCAM QuickView software included. This allows you to do basic post-analysis of your captured IR images and to make simple reports in a PDF-format.

TECHNICAL SPECIFICATIONS



FLIR SYSTEMS AB

World Wide Thermography Center
Rinkebyvägen 19 - PO Box 3
SE-182 11 Danderyd
Sweden
Tel.: +46 (0)8 753 25 00
Fax: +46 (0)8 753 23 64
e-mail: sales@flir.se
www.flir.com

FLIR SYSTEMS LTD.

United Kingdom
Tel.: +44 (0)1732 220 011
e-mail: sales@flir.uk.com

FLIR SYSTEMS Co. LTD.

Hong Kong
Tel.: +852 27 92 89 55
e-mail: flir@flir.com.hk

FLIR SYSTEMS GMBH

Germany
Tel.: +49 (0)69 95 00 900
e-mail: info@flir.de

FLIR SYSTEMS SARL

France
Tel.: +33 (0)1 41 33 97 97
e-mail: info@flir.fr

FLIR SYSTEMS S. R. L.

Italy
Tel.: +39 02 99 45 10 01
e-mail: info@flir.it

FLIR SYSTEMS AB

Belgium
Tel.: +32 (0)3 287 87 10
e-mail: info@flir.be

WWW.FLIR.COM



SPECIFICATIONS ARE SUBJECT TO
CHANGE WITHOUT NOTICE
©Copyright 2006, FLIR Systems, Inc.
All other brand and product names are
trademarks of their respective owners

IMAGING PERFORMANCE

Field of view/min focus distance	23° x 17°/0.3 m
Thermal sensitivity	0.10°C at 30°C
Image frequency	50 Hz non-interlaced
Focus	Manual
Detector type	Focal Plane Array (FPA), uncooled microbolometer 320 x 240 pixels
Spectral range	7.5 to 13 μm
Digital zoom	1x, 2x or 4x

IMAGE PRESENTATION

Video output	PAL or NTSC, standard RCA composite video
External display	2.5" color LCD, 16K colors

MEASUREMENT

Temperature range	-20°C to +100°C
Accuracy	±2°C, ±2%
Repeatability	±1°C, ±1%
Measurement mode	3 movable spots, area max, area min, area avg, dew-point alarm color and/or sound alarm above or below
Menu controls	Palettes (iron, rainbow, rainbow HC, B&W, B&W inverse), auto-adjust (continuous/manual)
Set-up controls	Date/time, temperature units °C/°F, language, scale, info field, LCD intensity (high/normal/low)
Measurement corrections	Emissivity variable from 0.01 to 1.0, reflected ambient

IMAGE STORAGE

Type	Built-in FLASH memory (> 80 images)
File formats	Standard JPEG
Text annotation of images	Predefined text selected and stored together with the image

LENSES (OPTIONAL)

2 x Telescope	14° x 10°/0.5 m
0.5 Wide angle	41° x 31°/0.2 m



adapt your camera
to EVERY situation

LASER LOCATIR™

Classification	Class 2
Type	Semiconductor AlGaInP Diode Laser: 1mW/635 nm red

BATTERY SYSTEM

Type	Li-Ion, rechargeable, field replaceable
Operating time	2 hours continuous operation. Display shows battery status
Charging system	In camera, AC adapter or 12 V from car (with optional Std. cable) 2 bay intelligent charger, 12 V
AC operation	AC adapter 90-260 V AC, 50/60 Hz, 12 V DC out
Voltage	11-16 V DC
Power saving	Automatic shutdown and sleep mode (user selectable)

ENVIRONMENTAL SPECIFICATION

Operating temperature range	-15°C to +50°C
Storage temperature range	-40°C to +70°C
Humidity	Operating and storage 20% to 80%, non-condensing
Encapsulation	IP54, IEC 359
Shock	Operational: 25G, IEC 68-2-29
Vibration	Operational: 2G, IEC 68-2-6

PHYSICAL CHARACTERISTICS

Weight	< 800 g, incl. battery
Size	272 mm x 80 mm x 105 mm
Tripod Mounting	1/4" - 20
Cover case	Plastic and rubber

INTERFACES

USB	Image and text transfer to PC
RS-232 cable (optional)	Image and text transfer to PC
Video Output	Standard RCA composite video

THERMACAM™ B4 INCLUDES:

IR camera, Carrying case, Power supply, Handstrap, Lens cap, ThermoCAM Quickview™ Software, USB cable, User manual, Power cord, Battery (2), Battery charger