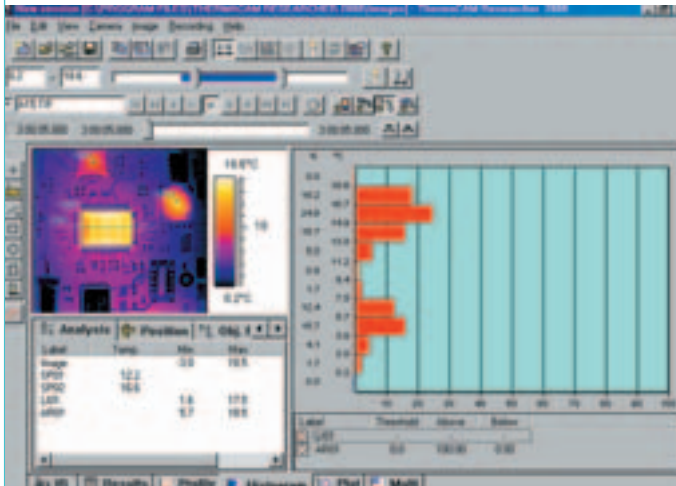


ThermaCAM™ Researcher™

Powerful, Real-time storage
and analysis software



Histogram chart shows relative distribution of temperature within a user-defined area.

ThermaCAM Researcher software has been especially designed for professionals in Research and Development, scientists and all other infrared users that want a detailed static or real-time analysis of thermal processes. It has been developed for use in scientific environments where detailed thermal analysis of dynamic events is required.

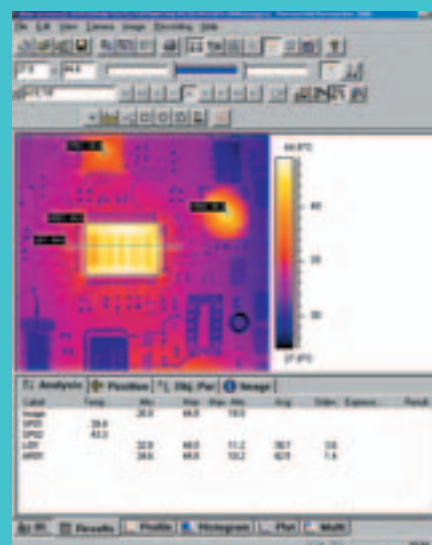
Windows® based and extremely versatile, ThermaCAM Researcher adds a new level of power and flexibility to thermal imaging by offering extensive analysis capabilities as well as high speed data acquisition. Researcher seamlessly stores, retrieves and analyses IR images and data directly from your IR camera allowing in-depth and precise evaluation of thermal performance.

ADVANCED FEATURES FOR EXTENSIVE THERMAL ANALYSIS

ThermaCAM Researcher offers powerful built-in measurement and analysis functions for fast and extensive temperature analysis including isotherms and spot measurements, line profiles, area histograms, image subtraction capability and many more. All measurement tools allow independent emissivity and distance settings.

A flexible screen lay-out, automatic adjustments for best image possible, user-defined recording conditions, sequence editing, customisable measurement tool graphics, comprehensive result tables and OLE technology provide unparalleled flexibility and power in a compact and portable package.

- IEEE-1394 FIREWIRE INTERFACE
- POWERFUL TEMPERATURE ANALYSIS
- STATIC ANALYSIS, PC CARD INTERFACE (5-7 Hz) OR DIGITAL VIDEO INTERFACE (50/60Hz)
- AUTOMATIC TEMPERATURE VS. TIME ANALYSIS
- VIEW LIVE IR VIDEO
- REMOTE CONTROL OF THE IR CAMERA FROM A PC
- UP TO 750/900 Hz REAL-TIME DIGITAL RECORDING WITH VIDEO INTERFACE
- AUTOMATIC CONVERSION OF IR IMAGES TO AVI, BMP OR MATLAB® FORMATS



ThermaCAM Researcher measurement tools allow extensive thermal analysis.



THREE VERSIONS: EACH ONE PERFECTLY ADAPTED TO YOUR SPECIFIC NEEDS AND CAMERA SYSTEM

ThermaCAM™ Researcher™ supports three hardware configurations: a FireWire interface, a PC-card camera interface and a parallel camera interface. Which interface to use depends on the model of your infrared camera and your specific requirements.

IEEE-1394 FIREWIRE INTERFACE FOR THERMACAM S-SERIES USERS

If you are working with one of our newest ThermaCAM S60 or ThermaCAM S40 cameras, you will benefit of the FireWire interface. It allows for super fast image and data transfer of real-time, fully radiometric 14-bit JPEG images.

THERMACAM SC-CAMERA USERS

If you are working with a FLIR Systems ThermaCAM SC you can choose between the following options:

RESEARCHER RT: REAL TIME VIDEO AND DATA ANALYSIS

A PC card interface allows capturing images at the rate of 5 - 7 Hz.

RESEARCHER HS: HIGH SPEED DIGITAL IR DATA ACQUISITION AND ANALYSIS

Coupled with a parallel interface, ThermaCAM Researcher High Speed provides digital video and data acquisition up to 50 -750 Hz, depending on your camera type.

POWERFUL RECORDING SYSTEM

Fully radiometric digital IR-video can be recorded to a hard disk for later play back. Many setting alternatives to start/stop a recording are available: start/stop at a certain time, at a trig signal or manually by pressing a button. Recording speed can be set to real-time (50 - 900 Hz), to a selectable time or image interval (every 1, 2, 3, ... images) or to store every time there is an external trig signal.

FLIR SYSTEMS AB
World Wide Thermography Center
Rinkebyvägen 19 - PO Box 3
SE-182 11 Danderyd
Sweden
Tel.: +46 (0)8 753 25 00
Fax: +46 (0)8 753 23 64
e-mail: sales@flir.se
www.flir.com

FLIR SYSTEMS LTD.
United Kingdom
Tel.: +44 (0)1732 220 011
e-mail: sales@flir.uk.com

FLIR SYSTEMS Co., LTD.
Hong Kong
Tel.: +852 2792 8955
e-mail: flir@flir.com.hk

FLIR SYSTEMS GmbH
Germany
Tel.: +49 (0)69 95 00 900
e-mail: info@flir.de

FLIR SYSTEMS SARL
France
Tel.: +33 (0)1 41 33 97 97
e-mail: info@flir.fr

FLIR SYSTEMS S.R.L.
Italy
Tel.: +39 02 99 45 10 01
e-mail: info@flir.it

FLIR SYSTEMS AB
Belgium
Tel.: +32 (0)3 287 87 10
e-mail: info@flir.be

WWW.FLIR.COM



SPECIFICATIONS ARE SUBJECT TO CHANGE WITHOUT NOTICE
©Copyright 2004, FLIR Systems, Inc.
All other brand and product names are trademarks of their respective owners

THE FOLLOWING BUTTONS EXIST ON THE STANDARD TOOL BAR



- Create a new session.
- Open an existing session.
- Open/Add images to the current session.
- Save the current session using the current name.



- Select disk images as the image source.
- Select the live camera as the image source.
- Move the camera focus towards the lens.
- Switch on the function Automatic adjustment of the image scale.
- Freeze the live stream of images from the camera.
- Bring up the image settings dialogue window.
- Bring up the palette selection dialogue.

THE FOLLOWING FUNCTIONS EXIST ON THE PLAY IMAGES TOOL BAR



- Name of the current image.
- 7 VCR style playback buttons. Stop in the middle.
- A control by which the replay rate is controlled:
 - "x 1" means full speed from disk.
 - "x 2" means twice full disk speed (i.e. every other image is not shown)
 - "÷2" means half full speed.
- Auto rewind button.
- The "lock temperature scale" button.
- The "lock object parameters" button.
- The "lock analysis tools" button.
- The "lock zoom factor" button.