



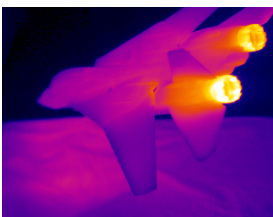
Security threats hide unseen in darkness, out of sight or veiled by obscurants like dust, fog, and smoke. The TI-Sentinel thermal imaging surveillance system exposes threats by identifying the heat emitted by humans, structures, and all objects found in the environment.

VERSATILE

The TI-Sentinel thermal imager is available with a variety of lens options to suit different applications. Provides fixed and mobile, day/night surveillance and detection. The TI-Sentinel is able to run continuously 24/7.

CRISP IMAGES

Clear, detailed, high-contrast images are captured by the TI-Sentinel at distances within 1000 m for humans and 2000m for vehicles and boats, enabling maximum target location and identification. The TI-Sentinel incorporates the latest uncooled microbolometer detector technology.



▶ TI-Sentinel™

THERMAL IMAGING SURVEILLANCE SYSTEM

EASY TO USE

Turn it on, and start using the TI-Sentinel immediately, with continuous digital image optimisation, the image quality is always maximized.

ADVANCED FEATURES

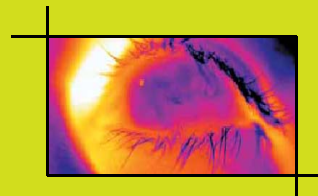
Detect and identify vehicles or people within dark areas instantly by using the Isotherm colour infrared tagging system.

Record the video using the standard video output port. The system provides switchable PAL or NTSC.

IP ADDRESSABLE

The TI-Sentinel is equipped with an RJ45 Ethernet interface to enable communications back to a local or distant control room.

Now with up to x 8 Digital Zoom.



F2K

...it's time to get focused...

TI-Sentinel™ TICam/40-P

IMAGING PERFORMANCE	
Field of View	Choice of 7° / 12° / 24° / 45°
Thermal Sensitivity	0.08°C at 30°C
Focus	Electric motor, Automatic focus
Detector Type	Focal Plane Array (FPA)
	Uncooled microbolometer 320 x 240 pixels
Spectral Range	7.5 to 13 µm
IMAGE PRESENTATION	
Video Output	PAL or NTSC, standard RCA composite video
POWERSYSTEM	
AC Operation or DC Operation	AC operation, 24V AC, 90-260 V AC, 50/60Hz DC operation, 10-30V DC
ENVIRONMENTAL SPECIFICATION	
Operating Temperature Range	-15°C to +55°C
Storage Temperature Range	-40°C to +70°C
Humidity operating and storage	10% to 95%, non-condensing
Encapsulation	IP66 and NEMA 4
Shock, operational	25G, IEC 68-2-29
INTERFACE OPTIONS	
IEEE-1394 FireWire / RS-232 / RJ-45 Ethernet	
FEATURES	
Electronic Digital ZOOM	x2, x4 and x8
Image Display	B&W, white or black hot, colour
Isotherm function, object threshold tagging	Shows hot spots in colour
AutoAdjust, (one touch)	Continuous image contrast optimisation

PAN & TILT OPTIONS
A very wide range of pan & tilt options are available for use with the TI-SENTINEL range

