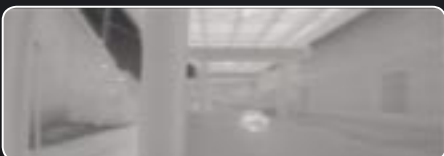


Thermal imaging cameras
for security and surveillance applications

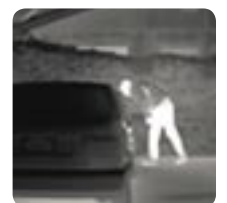


WideEye

Thermal imaging camera with ultra wide field of view



WideEye, from FLIR Systems, the world leader for thermal imaging systems



The WideEye is the world's first thermal imager offering a 180° field of view. It provides the ability to monitor large areas with a single camera. The ultra wide field of view offers continuous security coverage and enables you to detect and locate security threats throughout the entire perimeter. WideEye is ideally suited to work in conjunction with a mid or long range camera in a "slew to cue" configuration.

Two focal plane array detectors 640 x 120 pixels

The WideEye incorporates two 320 x 120 pixels detectors. Combined these detectors deliver a crisp 640 x 120 pixels thermal image. Advanced internal camera software delivers a crisp image without the need for user adjustments. It provides high quality thermal imaging in any night- or daytime environmental conditions.

Full 180° coverage

WideEye allows you to cover an entire area, 24/7, with a single camera. Thanks to the extremely wide field of view (180°) of the WideEye, operators get complete situational awareness, ideal for

commercial spaces like warehouses, distribution centers, ports and airports, for both interior and exterior applications. WideEye provides a high level of surveillance with only one thermal imaging camera.

Optional 360° viewer capability

As a network enabled tool, you can connect two WideEye cameras together. Install two WideEye thermal imaging cameras back-to-back and you will get a complete 360° view. Choose either analog or digital connectivity to link to existing or new infrastructure



Connection to other thermal imaging cameras

The WideEye can be connected to other FLIR Systems thermal imaging cameras to create an automated network of surveillance cameras, providing high resolution identification of threats. If the WideEye detects a potential threat, another camera, mounted on a Pan/Tilt mechanism can point to the suspected object. It will allow you to have a closer look at the situation and decide if it is a real threat or not.

Easy and fast installation

The WideEye incorporates easily with common power and video interfaces found in existing and new security systems. It can be easily integrated into any existing CCTV infrastructure providing early detection and visibility 24/7 all the year round. The image produced by the two 320 x 120 detectors can be displayed on virtually any existing display that accepts composite video.



The WideEye can be easily installed

Fixed mounted or portable installation

Ultra-compact, the WideEye can be installed in any environment. As a portable system, it can be deployed quickly and easily. WideEye also accepts multiple power forms for added convenience.

The WideEye offers an exceptional 180° wide field of view



Designed for use in harsh environments

The WideEye is an extremely rugged systems. Its vital core is well protected, Mil-Std-810E and IP66 rated, against humidity and water. The WideEye operates between -32°C and +55°C.

Multiple installation options

Various options exist to connect the WideEye and integrate it in your existing systems. The WideEye can be configured for stand alone use, as part of a network or in a hybrid configuration with local and network based control:

- *Analog configuration:* Two video cables can be connected to any existing display that accepts composite video.
- *Ethernet configuration:* the WideEye can be integrated in any existing ethernet network. The video is displayed over a PC. No need to put extra cables. Using this configuration, you can monitor all activity in a protected area over the internet. Even when you are thousands of kilometers away.

Optional Software

A Software Developers Kit (SDK) to integrate the WideEye into an existing network is optionally available.



WideEye: the perfect tool for security and surveillance applications

In complete darkness, in the most diverse weather conditions the WideEye creates a virtual security fence and is finding its way into many security and surveillance applications.

Nuclear plants, petrochemical installations, warehouses, ports and airports, ... they all are vulnerable to theft, or even worse terrorist attacks, and can be protected by using thermal imaging cameras like the WideEye.

Terrorism, vandalism, and random violence threaten the safety of personnel and the integrity of public and private facilities. A comprehensive security program utilizing thermal imaging cameras like the WideEye is the key to asset protection and risk mitigation. The WideEye exposes threats hidden in the darkness, concealed by adverse weather, and veiled by obscurants like dust, fog, and smoke.

The WideEye is a new weapon for intrusion detection. It detects intruders sooner, provides more time to react and protects people, assets, and infrastructures. It is operational 24 hours a day even in the darkest of nights, light fog, snow, smoke, ...

Protect your assets also in broad daylight

The WideEye will not only protect your assets against intruders during the darkest of nights. It is also perfectly suited to complement your existing cameras during daytime. The WideEye will detect objects that remain invisible for the naked eye. It is not affected by glare from the sun. The WideEye will allow you to see through the glare, and detect possible intruders. Also people hiding in the shadows or in bushes, will be seamlessly detected by the WideEye.

Technical specifications

IMAGING PERFORMANCE

<i>Detector type</i>	Two Focal Plane Array (FPA), uncooled microbolometer 320 x 120 pixels detectors producing a 640 x 120 pixels thermal image
<i>Spectral range</i>	7.5 to 13µm
<i>Field of view</i>	180° (H) x 38° (V)
<i>Spatial resolution (IFOV)</i>	6.9 mrad
<i>Thermal sensitivity</i>	85 mK at 25°C
<i>Image frequency</i>	30 Hz (NTSC) or 25 Hz (PAL)
<i>Focus</i>	Fixed
<i>Electronic zoom</i>	With Ethernet Control Console
<i>Image processing</i>	Automatic Gain Control (AGC) Video Motion Detection (VMD) with Ethernet Control Console

SYSTEM FEATURES

<i>Remote Control</i>	With Ethernet Control Console
<i>Automatic heater</i>	Yes

IMAGE PRESENTATION

<i>Video output</i>	2 x NTSC or PAL composite video, 14-bit digital thermal image transfer over IP
<i>Connector types</i>	BNC (2) provides video output
<i>VOIP</i>	Uncompressed

POWER

<i>Requirements</i>	12 - 36 V DC or 24 V AC
<i>Consumption</i>	<30 W nominal

ENVIRONMENTAL SPECIFICATIONS

<i>Operating temperature range</i>	-32°C to +55°C
<i>Storage temperature range</i>	-50°C to +65°C
<i>Automatic Window defrost</i>	Yes
<i>Humidity</i>	Rain
<i>Sand/dust</i>	Mil-Std-810E
<i>Encapsulation</i>	IP66
<i>Shock</i>	Mil-Std-810E
<i>Vibration</i>	Mil-Std-810E

PHYSICAL CHARACTERISTICS

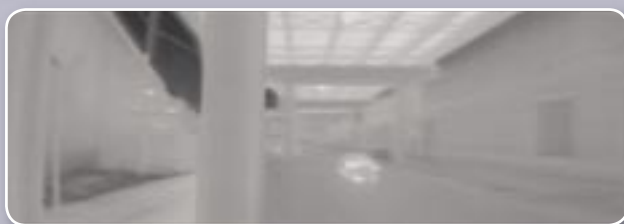
<i>Camera Weight</i>	5.5 kg
<i>Camera Size</i>	216 x 178 x 140 mm
<i>Shipping weight (camera + packaging)</i>	11.4 kg
<i>Shipping size (camera + packaging) (L x W x H)</i>	36 cm x 51 cm x 34 cm

INTERFACES

<i>TCP/IP</i>	Command and Control all functions
---------------	-----------------------------------

STANDARD PACKAGE

WideEye thermal imaging camera, Ethernet cable, lab power supply with cord, lab video cables, operator manual



SPECIFICATIONS ARE SUBJECT TO CHANGE WITHOUT NOTICE

©Copyright 2007, FLIR Systems, Inc. All other brand and product names are trademarks of their respective owners.

FLIR Systems: a full range of infrared cameras for thermal night vision applications

Whatever your application, FLIR Systems offers a solution to make you see clearly at night and in the most diverse weather conditions.

FLIR Systems has more than 50 years of experience in the development and production of infrared cameras for night vision applications. Recent technological developments have made it possible that know-how, which was reserved for military and high-end scientific users only, has made its way to many more applications.

FLIR Commercial Vision Systems B.V.

Charles Petitweg 21
4847 NW Teteringen - Breda
The Netherlands
Phone : +31 (0) 765 79 41 94
Fax : +31 (0) 765 79 41 99
e-mail : flir@flir.com
www.flir.com

FLIR Systems, Inc

CVS World Headquarters
70 Castilian Drive
Santa Barbara, CA 93117
USA
Phone : +1 805 964 9797
Fax : +1 805 685 2711
e-mail : sales@flir.com

FLIR Systems Ltd.

United Kingdom
Phone : +44 (0) 1732 220 011
Fax : +44 (0) 1732 220 014
e-mail : flir@flir.com

FLIR Systems AB

Spain
Phone : +34 91 241 13 85
Fax : +34 91 241 13 86
e-mail : flir@flir.com

FLIR Systems AB

Sweden
Phone : +46 (0) 8 753 25 00
Fax : +46 (0) 8 753 23 64
e-mail : flir@flir.com

FLIR Commercial Vision Systems

China
Tel. : +86 10 5869 8762
Fax : +86 10 5869 8763
e-mail : flir@flir.com

Your local dealer: