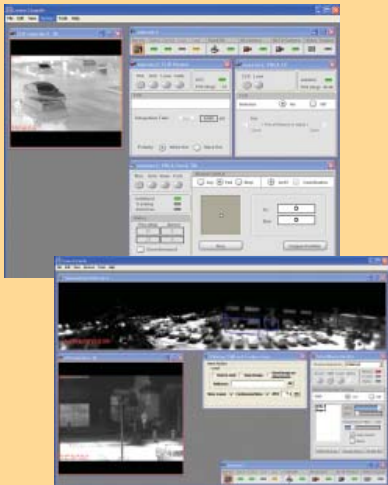




Step-Stare capability provides Layered Situational Awareness (LSA), as well as single image view for intrusion assessment.



Operators can control thermal and visible cameras as well as pan/tilt functionality.

Panoramic and WideEye view allow operators to hone in on detection zones for intrusion assessment with the appropriate pan/tilt camera system for visual assessment of alarms within the intrusion zone.



ThermoVision Nexus is a Sensor Command and Control system architecture that allows multiple users to monitor and adjust sensors throughout security network. Users can remotely position sensors on an IP network and, in real-time, monitor camera video and configure camera field of view, camera tilt angle, sensitivity, and contrast.

Through an intuitive GUI, users can cue a specific sensor or group of sensors to map coordinates of alarms from a wide-angle sensor. Users can also manage the network through any configured console and provide user permission for specific tasks.

Legacy Connectivity

ThermoVision Nexus' open architecture allows you to attach and control other devices to the network. These devices include legacy serial ports, analog video, TASS, and Pelco-D®.

ThermoVision Nexus Console

The ThermoVision Nexus Console, which runs on Windows® (XP or 2000), is an application that gives users a common means of controlling any camera or group of sensors. The console incorporates streaming video players on which users can monitor video feeds from any of the connected sensors. Users can setup target detection criteria and alarms to provide notification of potential threats. These alarms may be configured to be audible, visual, or delivered via email.

Real-Time Adjustments and Refinements

Operators can adjust properties and settings for all critical security functions including video players, network administration, sensor control, remote cueing, scan list, panorama, and sensor map location. Specific functions and activities can be added, enhanced, or automated. Also, the console may be used to add more sensors to the network and to configure and operate existing sensors.

ThermoVision Nexus Connectivity

ThermoVision Nexus offers Ethernet connectivity throughout the architecture. This architecture allows users to configure multiple cameras and multiple users on a COTS network including control, video monitoring, and intelligent target detection and alarm processing. The configurable nature of Nexus allows the user to mix and match sensors and controllers to the particular application, without spending unnecessary effort designing for different scenarios.

FLIR's Developer's Tool Kit

Integrators can access ThermoVision Nexus capabilities via FLIR's Developer's Tool Kit, which provides all Nexus functionality for both Windows® (C and VB) and Linux/Unix, using a common object-oriented protocol to all sensors.

High Value, Cost Effective Solutions

FLIR controls the entire supply chain, from detector fabrication to components to software, and offers a broad spectrum of solutions, price points, performance specifications, and configuration options. Combine this with rapid service and support, and you get the highest value, most cost-effective security solutions.

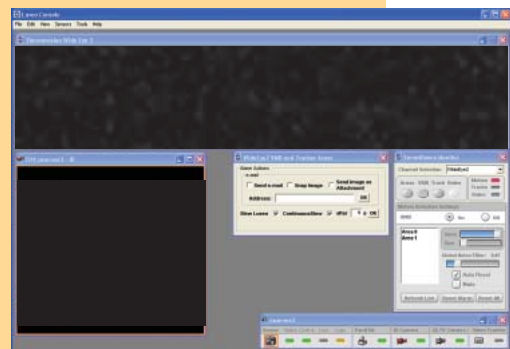
ThermoVision™ Nexus



Layered Situational Awareness (LSA)

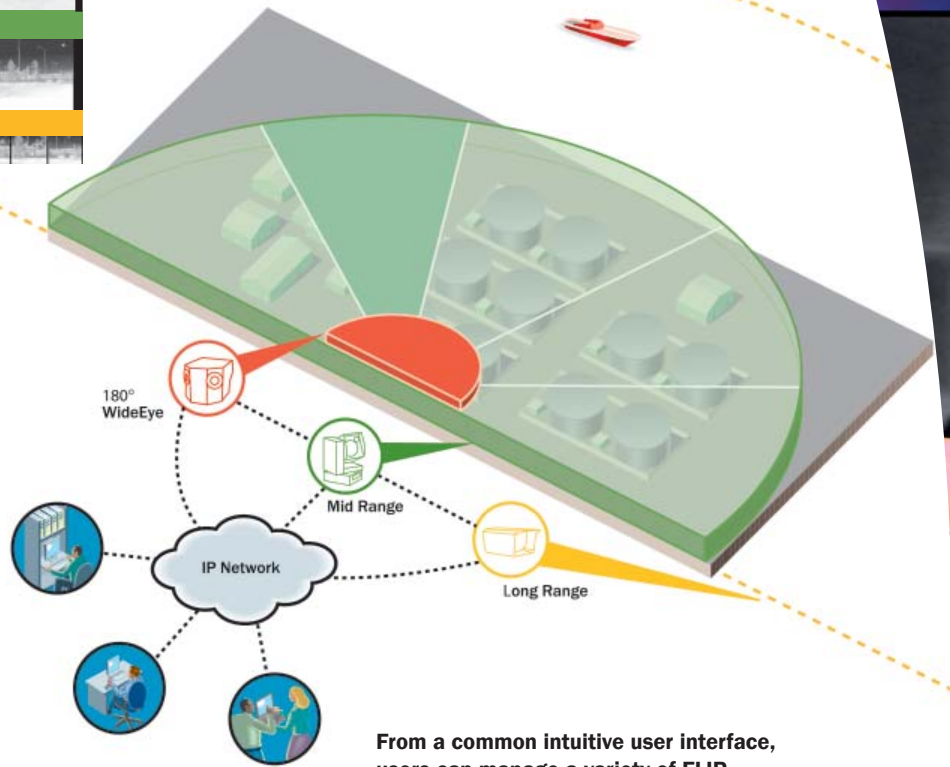


FLIR Thermal cameras identify intruders. To learn more about LSA, visit www.flir.com/LSA



Operators can obtain panoramic scene view for optimum Layered Situational Awareness. Image continually refreshes at pre-determined rate.

Equipment described herein may require US Government authorization for export purposes. Diversion contrary to US law is prohibited. ©2006 FLIR Systems, Inc. Specifications are subject to change. Check website: www.flir.com. 01252006



From a common intuitive user interface, users can manage a variety of FLIR camera systems: the short-range WideEye 180° viewer, the close-range Security HD, the mid-range Sentry, and the long-range Ranger II or TV 3000 MS. Users can connect the WideEye to a calibrated multi-sensor on the network for slew to cue by operator input or by video motion detection alarms – providing optimum Layered Situational Awareness (LSA).



FLIR Systems
+1 888.747.FLIR

Corporate Headquarters
FLIR Systems Inc.
27700A SW Parkway Avenue
Wilsonville, OR 97070 USA
p: +1 800.727.3547
p: +1 503.498.3547
f: +1 503.684.3207

Santa Barbara, CA, USA
Indigo Operations
70 Castilian Drive
Santa Barbara, CA 93117
p: +1 888.747.3547
p: +1 805.964.9797
f: +1 805.685.2711

Boston, MA, USA
p: +1 800.464.6372
p: +1 978.901.8000

Europe: United Kingdom
p: +44.1732.220011

Sweden
p: +46.8.753.2500

Canada
p: +1 800.613.0507
p: +1 905.637.5696

Middle East
p: +9714.299.6898

www.flir.com

